

GB

201M Reamers
Micrograin Solid Carbide
Straight Shank, Right Hand Cutting

ES

Escariadores 201M
Metal duro con micrograno
Diente recto, corte a derecha

FR

201M - Alésoirs
Carbure monobloc, micrograin
Queue droite - Coupe à droite

PT

Mandris - 201M
Metal duro microgrão
Encabadouro direito/haste reta, corte à direita

IT

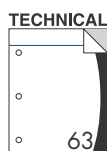
201M - Alesatori
Micrograna
Con gambo cilindrico - Taglio destro

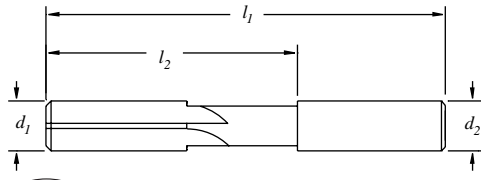
DE

201M - Reibahlen
Vollhartmetall, Feinstkorn
Zylinderschaft, Rechtsschneidend

ød mm	l ₁ mm	l ₂ mm	z	EDP No.
1	32	6	4	81001
1,5	38	9,5	4	81003
2	44	12,7	4	81005
2,5	50	12,7	4	81007
3	57	16	4	81009
3,5	63	19	4	81011
4	63	19	4	81013
4,5	70	22	4	81015
5	75	25	4	81017
5,5	75	25	4	81019
6	75	25	4	81021
7	82	28	6	81023
8	82	28	6	81025
9	89	31	6	81027
10	89	31	6	81029

TOLERANCES
ød = 1mm - 6mm = +0,008 - 0,000
>6mm - 10mm = +0,011 - 0,00





E

Series 200 Reamers - Fractional
Series 200 Reamers - Decimal
Micrograin Solid Carbide
 Short Series Reamer – Common Shank
 Straight Flutes – Right Hand Cutting

ES

Escariadores 200 - Pulgadas
Escariadores 200 - Milímetros
Carburo sólido con micrograno
 Escariadores de serie corta – zanco usual
 Filos rectos – corte a derecha



FR

Série 200 Alésoirs - Courts
Série 200 Alésoirs - Décimaux
Carbure monobloc micrograin
 Série courte - Queue standard
 Goujures droites - Coupe à droite

Series 200 Fractional

Reamer Diameter d_1	Shank Diameter d_2	Maximum Ream Length l_2	Overall Length l_1	No. of Flutes Z	Uncoated EDP No.
3/64	3/64	3/4	1-1/2	4	70003
1/16	1/16	3/4	1-1/2	4	70004
5/64	5/64	1	2	4	70005
3/32	3/32	1-1/4	2-1/4	4	70006
7/64	7/64	1-1/4	2-1/4	4	70007
1/8	1/8	1-1/4	2-1/4	4	70008
9/64	9/64	1-1/2	2-1/2	4	70009
5/32	5/32	1-1/2	2-1/2	4	70010
11/64	11/64	1-3/4	2-3/4	4	70011
3/16	3/16	1-3/4	2-3/4	4	70012
13/64	13/64	2	3	4	70013
7/32	7/32	2	3	4	70014
15/64	15/64	2	3	4	70015
1/4	1/4	2	3	4	70016
17/64	17/64	2-1/4	3-1/4	6	70017
9/32	9/32	2-1/4	3-1/4	6	70018
19/64	19/64	2-1/4	3-1/4	6	70019
5/16	5/16	2-1/4	3-1/4	6	70020
21/64	21/64	2-3/8	3-1/2	6	70021
11/32	11/32	2-3/8	3-1/2	6	70022
23/64	23/64	2-3/8	3-1/2	6	70023
3/8	3/8	2-3/8	3-1/2	6	70024
25/64	25/64	2-7/8	4	6	70025
13/32	13/32	2-7/8	4	6	70026
27/64	27/64	2-7/8	4	6	70027
7/16	7/16	2-7/8	4	6	70028
29/64	29/64	2-7/8	4	6	70029
15/32	15/32	2-7/8	4	6	70030
31/64	31/64	2-7/8	4	6	70031
1/2	1/2	2-7/8	4	6	70032

Series 200 Decimal

Reamer Diameter d_1	Shank Diameter d_2	Maximum Ream Length l_2	Overall Length l_1	No. of Flutes Z
.0470 - .0625	1/16	3/4	1-1/2	4
.0626 - .0781	5/64	1	2	4
.0782 - .0938	3/32	1-1/4	2-1/4	4
.0939 - .1094	7/64	1-1/4	2-1/4	4
.1095 - .1250	1/8	1-1/4	2-1/4	4
.1251 - .1406	9/64	1-1/2	2-1/2	4
.1407 - .1563	5/32	1-1/2	2-1/2	4
.1564 - .1719	11/64	1-3/4	2-3/4	4
.1720 - .1875	3/16	1-3/4	2-3/4	4
.1876 - .2031	13/64	2	3	4
.2032 - .2188	7/32	2	3	4
.2189 - .2344	15/64	2	3	4
.2345 - .2500	1/4	2	3	4
.2501 - .2656	17/64	2-1/4	3-1/4	6
.2657 - .2813	9/32	2-1/4	3-1/4	6
.2814 - .2969	19/64	2-1/4	3-1/4	6
.2970 - .3125	5/16	2-1/4	3-1/4	6
.3126 - .3281	21/64	2-3/8	3-1/2	6
.3282 - .3438	11/32	2-3/8	3-1/2	6
.3439 - .3594	23/64	2-3/8	3-1/2	6
.3595 - .3750	3/8	2-3/8	3-1/2	6
.3751 - .3906	25/64	2-7/8	4	6
.3907 - .4063	13/32	2-7/8	4	6
.4064 - .4219	27/64	2-7/8	4	6
.4220 - .4375	7/16	2-7/8	4	6
.4376 - .4531	29/64	2-7/8	4	6
.4532 - .4688	15/32	2-7/8	4	6
.4689 - .4844	31/64	2-7/8	4	6
.4845 - .5000	1/2	2-7/8	4	6